



DEALERSHIP BUILD PROGRAM | **BRAND ELEMENTS CATALOG 2024**
GEN4



ABOUT US

Ideal Image creates environments that build brand power through color, texture, size and shape. As a manufacturer of custom architectural and institutional furniture, interactive and static kiosks, point of purchase displays, graphics and fixtures, Ideal Image has the experience and diversities that result in savings for you.

Ideal Image has assembled an employee base of tenured sales representatives, project managers, engineers, journeymen finish carpenters, warehouse staff as well as professional delivery and installation crews. Ideal Image utilizes the most current and efficient management and manufacturing processes. Our manufacturing facility is state of the art and is equipped with the most current CNC routing, cutting and boring machinery. Our clean, climate controlled warehouses have the ability to store your finished goods. This allows for on-time deliveries and the flexibility that successful rollout programs require.

Ideal Image designs, fabricates and implements with communication and attention to detail that results in successful relationships with our clients.



TABLE OF CONTENTS

Company Profile & Contacts pg 2

Fixtures pg 4

Graphics pg 8

Furniture & Fixture Care pg 10

Warranty pg 11

Transportation & Set-Up pg 12

FIXTURES

F-1 MEDIA WALL/FIREPLACE

This is a wall mounted wood frame system that includes wood laminate finishes and quartz stone façade attached to the lower face. All surfaces finished in specified colors.

Fireplace and Media Unit not included. Dimensions and specs required for the fireplace and media unit prior to production. All electrical, gas and other connections by others.

Approximate dimensions: 28'W x 2'-3-1/8"D x 12'H



F-2 REFRESHMENT CREDENZA

This is a wall mounted set of cabinets that includes (3) wood laminate storage cabinets with (2) shelves in each, a metal laminate toe kick, and a Krion Bianco Opera solid surface countertop. *Veining in solid surface may not align on corners.* All surfaces finished in specified colors.

Approximate dimensions: 7'W x 2'-3-1/8"D x 3'-6"H



F-3 REFRESHMENT CREDENZA SHELVING

This is a wall mounted open faced wood laminate cabinet with (2) shelves that includes (2) sliding low iron glass doors and (3) recessed LED lights. All surfaces finished in specified colors.

Approximate dimensions: 7'W x 2'-3-1/8"D x 8'-8"H



F-4 RECEPTION BAR

This is a freestanding desk that includes a wood laminate top and legs, an LED backlit panel with a matte black Acura logo, a 1/4" etched glass modesty panel, a white lower cabinet, (2) power/USB grommets and a wire grommet. All surfaces finished in specified colors.

Electronics not included.

Approximate dimensions: 16'W x 3'D x 3'-6"H

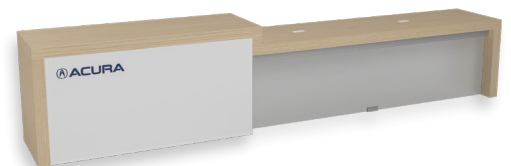


F-4A RECEPTION BAR ADA

This is a freestanding desk that includes a wood laminate top and legs, an LED backlit panel with a matte black Acura logo, a 1/4" etched glass modesty panel, a white lower storage cabinet, (2) power/USB grommets and a wire grommet. It also has a lower counter area for ADA access. All surfaces finished in specified colors.

Electronics not included.

Approximate dimensions: 16'W x 3'D x 3'-6"H, 2'-10"H- at ADA



F-5 OPEN CONSULTATION PLANTER

This is a freestanding white metal container with a black base that includes (2) stainless-steel inner plant pots and (2) stainless-steel drip trays.

Approximate dimensions: 8'W x 1'D x 1'-3"H



F-6 OPEN CONSULTATION BENCH

This is a freestanding wood laminate bench with metal inlays design and black base on the legs. All surfaces finished in specified colors.

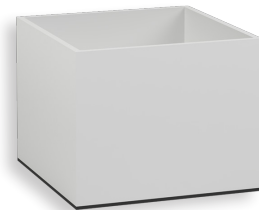
Approximate dimensions: 8'W x 1'-6"D x 1'-6"H



F-7 TREE PLANTER

This is a mobile white metal container with a black base that includes a stainless-steel inner plant pot and a stainless-steel drip tray.

Approximate dimensions: 2'-6"W x 2'-6"D x 2'H



F-8 STORAGE CREDENZA

This is a wall mounted set of cabinets that includes (4) wood laminate storage cabinets with shelf, a metal laminate toe kick, and a Krypton Bianco Opera solid surface countertop. *Veining in solid surface may not align on corners.* All surfaces finished in specified colors.

Approximate dimensions: 9'-6"W x 1'-8"D x 2'-6"H



F-9 SALES MANAGER CREDENZA

This is a wall mounted set of cabinets that includes (4) wood laminate storage cabinets with shelf, a metal laminate toe kick, and a Krypton Bianco Opera solid surface countertop. *Veining in solid surface may not align on corners.* All surfaces finished in specified colors.

Approximate dimensions: 9'-3"W x 1'-8"D x 2'-6"H



F-10 WORK BAR- SALES MANAGER

This is a wall mounted set of cabinets that includes (3) wood laminate open storage cabinets with (2) shelves, a metal laminate toe kick, and a wood laminate countertop. All surfaces finished in specified colors.

Approximate dimensions: 8'W x 2'D x 3'-6"H



F-11 CASHIER COUNTER

This is a mounted wood laminate wall with (2) wood laminate open storage cabinets with (2) shelves, (2) wood laminate open storage cabinets with a shelf, a metal laminate toe kick, and a Krion Bianco Opera solid surface countertop and transaction top. *Veining in solid surface may not align on corners.* All surfaces finished in specified colors.

Approximate dimensions: 7'-8-1/2"W x 2'-6"D x 2'-10"H

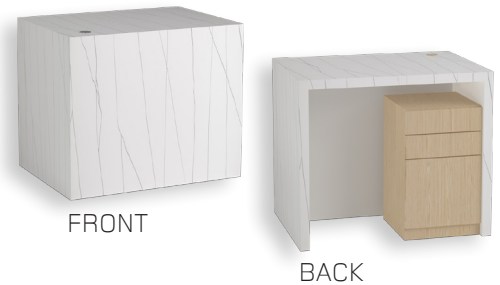
Lower worksurface 2'-4"H



F-12 SERVICE WRITE-UP TABLE

This is a freestanding desk that includes a Krion Bianco Opera solid surface top, front-wall and legs, white melamine surfaces on the undercounter knee space (1) Box/Box/File and (2) wire grommets. *Veining in solid surface may not align on corners.* All surfaces finished in specified colors.

Approximate dimensions: 6'W x 2'-6"D x 3'H



F-13 SERVICE WRITE-UP PRINTER PEDESTAL

This is a mobile wood laminate cabinet that includes a drawer and a Krion Bianco Opera solid surface top and face. *Veining in solid surface may not align on corners.* All surfaces finished in specified colors.

Approximate dimensions: 3'W x 1'-9"D x 2'-4"H



F-14 RETAIL BACKBAR

This is a wall mounted set of cabinets that includes (4) locking wood laminate storage cabinets with (2) shelves in each, a metal laminate toe kick, and a Krion Bianco Opera solid surface countertop. *Veining in solid surface may not align on corners.* All surfaces finished in specified colors.

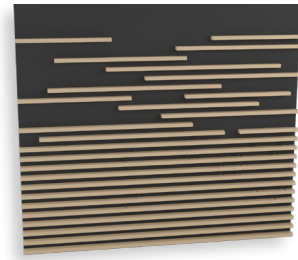
Approximate dimensions: 9'-10-3/4"W x 1'-6"D x 3'-2"H



F-15 RETAIL MERCHANDISE DISPLAY

This is a wall mounted black panel that includes wood laminate shelves in various lengths and (26) merchandise front hooks. All surfaces finished in specified colors.

Approximate dimensions: 9'-10-3/4"W x 4-1/2"D x 8'-10"H



F-16 RETAIL VITRINE

This is a mobile wood laminate cabinet that includes a lockable low iron glass display case with (4) vertical LED lights and a battery pack, a battery pack storage area, and a Krion Bianco Opera solid surface countertop. *Veining in solid surface may not align on corners.* All surfaces finished in specified colors.

Approximate dimensions: 4'W x 2'D x 4'-2"H



HD-15 PORTABLE POWER SUPPLY

This is an additional Portable Lithium-Ion battery pack for use in the F-16 Acura Retail Vitrine. Allows for standalone location of display. Plug & Play power connections. Comes with plug in charger.



GRAPHICS

G-1 ILLUMINATED TAGLINE "PRECISION CRAFTED PERFORMANCE"

This is a set of dimensional backlit LED channel letters. Exterior of letters painted per specification.

Approximate dimensions: 25'-3"w x 12"h x 6"d



G-2A DIMENSIONAL LOGO

This is die-cut dimensional letters and Logo finished in specified paint color.

Approximate dimensions: 32-1/2"w x 4-1/2"h x 1/2"d



G-2B DIMENSIONAL LOGO

This is die-cut dimensional letters and Logo finished in specified paint color.

Approximate dimensions: 24-1/2"w x 3-1/2"h x 1/2"d



G-3 NVD LOGO

This is a die-cut dimensional Logo finished in specified paint color.

Approximate dimensions: 54"w x 53-1/2"h x 1/2"d



G-4 CAR PHOTOGRAPHS

Includes full backside LED's, power supply, power cord, dimmer capable, wall mounting hardware, black coated frame and backside light blocker panel.

Approximate dimensions: 64"w x 33"h x 3-1/2"d



G-5 ELEVATOR DOOR LOGO

Logo cut from 3M vinyl. Matches Pantone 877C.

Approximate dimensions: 30" w x 29-1/2" h



G-6A DIE-CUT RESTROOM FLAG

This is a wall mounted, double sided flag sign, with Face die-cut Male and Female pictograms. Finished in specified painted finishes.

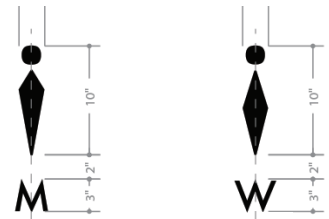
Approximate dimensions: 22-1/2" w x 12" h x 1" d



G-6B DIMENSIONAL PICTOGRAM ON RESTROOM DOORS

This includes a die-cut Pictogram and letterform for each, Male and Female, finished in specified colors that are to be directly applied to surface of the doors.

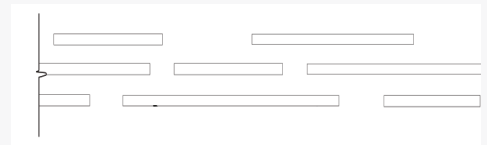
Approximate dimensions: 2-1/2" w x 15" h x 1/2" d



G-7 VINYL ON GLASS

This is a 2" h white graphic strip cut from 3M vinyl applied to glass doorways, office entries, and partition walls at eye height.

Approximate dimensions: 2" h



G-8 DESK NAME PLATE

This is a custom, individually produced plate with a design theme of black acrylic and white lettering in Futura Book font.

Approximate Dimensions: 10" w x 1" d x 2" h.



FURNITURE & FIXTURE CARE

Proper maintenance using the correct care products is necessary to ensure the durability of branded elements. The materials have different cleaning and maintenance requirements. See below for important information and instructions.

PAINTED SURFACES

- Clean using soft, damp micro fiber cloth and let dry.
- If further cleaning is needed use automotive grade paint cleaner.

STAINLESS STEEL

Clean using soft, damp micro fiber cloth and let dry. If further cleaning is needed use Stainless Steel Magic.

LAMINATE SURFACE

- Clean with a lukewarm water and mild detergent.
- Do not soak.
- Clean using soft, damp cloth and rub dry.
- Pre-clean stubborn dirt with Dirtex.
- To avoid streaks: re-clean with water solution.

FABRIC GRAPHICS

Fabric requires different care than other hard surface display materials. With proper care, your fabric product will perform well for a long time.

GRAPHICS WITH PROTECTIVE COATING

- Clean with a lukewarm water and mild detergent.
- Do not soak.
- Clean using soft, damp cloth and rub dry.
- Pre-clean stubborn dirt with Dirtex.
- To avoid streaks: re-clean with water solution.

LARGE FORMAT GRAPHICS WITH PROTECTIVE COATING

Clean with a lukewarm water and mild detergent.

GLASS

- Clear glass: can be cleaned with regular glass/window cleaner.
- Frosted glass: for stubborn fingerprints clean with denatured alcohol.

PLASTIC AND ACRYLIC PARTS

- Plastics tend to be statically charged and thus attract dirt.
- Regular cleaning is necessary to prevent films of dirt from forming.
- Stains are to be removed carefully using Dirtex/Brilliance and a soft cloth. Other conventional cleaning products are aggressive and can cause irreparable damage to acrylic.

KRION SOLID SURFACES

- Clean with warm water and soap.
- Clean using any non-abrasive, ammonia-free cleaner.

WARRANTY

Ideal Image guarantees its products to be of good quality and free of manufacturers defects.

The Warranty Period begins on the date of set-up by Ideal Image personnel. See Product Warranty Period terms below. During the Warranty Period, Ideal Image will, at its own discretion, repair or replace any product or part deemed to be defective. This warranty covers issues due to normal use. It does not cover any defect resulting from misuse, abuse, damage by others, water damage or other environmental conditions other than for the intended design. See care instructions on previous page which are compatible with the variety of materials used. Ideal Image personnel may re-visit completed projects at appropriate time intervals for follow-up quality inspections.

PRODUCT WARRANTY PERIOD

- Metal and wood structures - 5 years.
- Graphics - Laminated images, large format image panels, and fabric image inserts - 2 years.
- Electronics - See specific manufacturer's warranty.
- Seating - See specific manufacturer's warranty.

To enact a warranty claim, the dealer should contact Ideal Image with the concern. At that time, the dealer may be asked to provide additional information to allow the Ideal Image team to evaluate the cause and prepare the appropriate action to be taken. If the determination results in a needed warranty repair or replacement, said action will be performed by Ideal Image within 30 days.

Warranty work is available after full payment for the original agreement has been received by Ideal Image.

CUSTOMER SERVICE

In the event a warranty or service concern develops with our products, please contact Ideal Image Customer Service Monday-Friday, between the hours of 8 AM and 5PM Eastern Standard Time via 1-800-774-7617 extension #1139. If your call is beyond our normal working hours, please leave a voice message with the project name, your full name, phone number and a brief explanation of the nature of your call. Or email us at: customerservice@idealimageinc.com.

A customer service representative will return your call the next business day. The customer service representative will facilitate this process between you and project management. Resolution of your concerns will be addressed and/or completed within 30 days of the initial contact.

Phone: 1-800-774-7617 ext.1139 Fax: 1-937-832-5270
Email: customerservice@idealimageinc.com

TRANSPORTATION & SET-UP

Ideal Image operates its own transportation company which primarily utilizes a padded carrier process similar to a residential mover. Prior to loading the product, the warehouse supervisor and his crew administer a thorough cleaning and complete a final load inspection. This method allows us to make any final adjustments to the order or address any shortages with the order. Utilizing a padded carrier limits the possibility of shipping damage and any inconvenience to the dealer in terms of delivery and unloading.

Equally important is the professionalism of the set-up teams we have created. Ideal Image set-up teams consist primarily of our employees. Generally, set-up teams are 1-4 technicians, with each project always having at least one individual with a site supervisory level of expertise.

Much goes into the training of an on-site project manager, also known as a site supervisor. A large portion of the training centers on the ability to achieve a competent status in millwork fabrication.

Ideal Image on-site supervisors must have a minimum of 5 years of millwork fabrication experience. The individual must understand the construction of a cabinet or display in order to insure proper set-up of the display. The supervisor must also have the knowledge and training for managing others. Ideal Image on-site supervisors work closely with set-up technicians to insure quality workmanship which leads to satisfied clients.

Our site supervisors remain in constant contact with project management at the home office near Dayton, Ohio to keep them informed of project progress or any potential issues. Ideal Image site supervision is responsible for administering the project walk-through at set-up completion. The supervisor will complete the final walk-through with the retailer or their designated party to insure complete satisfaction. Ideal Image provides a line item check list for this walk-through. Each item is carefully reviewed. Any repairs/adjustments derived from the walk-through will be addressed prior to the Ideal Image team departing the job site to insure final completion. These important services provide the white glove treatment you expect, and deserve.






IDEAL IMAGE
— Est. 1993 U.S.A. —
Building Brand Power

Corporate Headquarters
115 Haas Drive
Englewood, OH 45322, USA
1-800-774-7617
Fax: 1-937-832-5270
www.idealimageinc.com